



LONDON
MATHEMATICAL
SOCIETY
EST. 1865

LMS – EPSRC Durham Symposium

Professor Norbert Peyerimhoff

28th July 2016, Durham

The work of the LMS for mathematics



LONDON
MATHEMATICAL
SOCIETY
EST. 1865

The charitable aims of the Society:

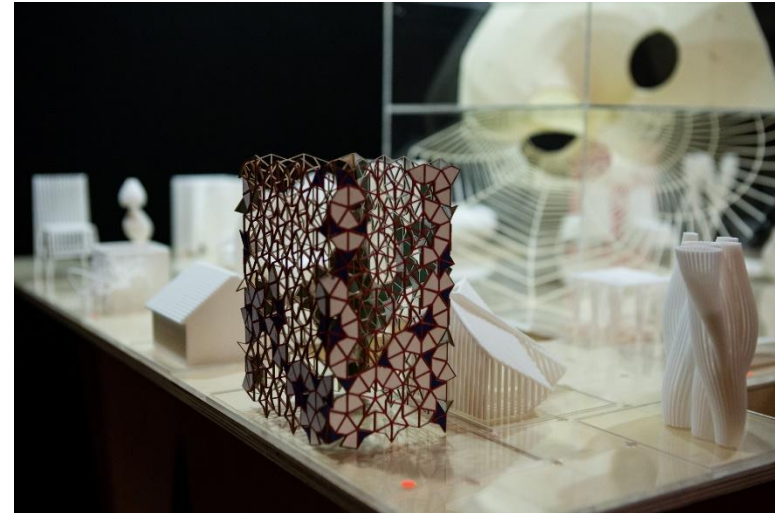
Funding the advancement of mathematical knowledge

Encouraging mathematical research and collaboration

Celebrating mathematical achievements

Publishing and disseminating mathematical knowledge

Advancing and **promoting** mathematics



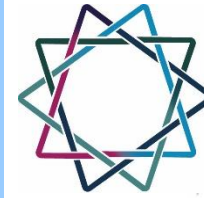
30 Pieces', George Legendre



The attendees of the Young Researchers in Mathematics Conference 2015, held at Oxford

Historical Moments of the London
Mathematical Society

1865



LONDON
MATHEMATICAL
SOCIETY
EST. 1865



G. C. De Morgan



De Morgan

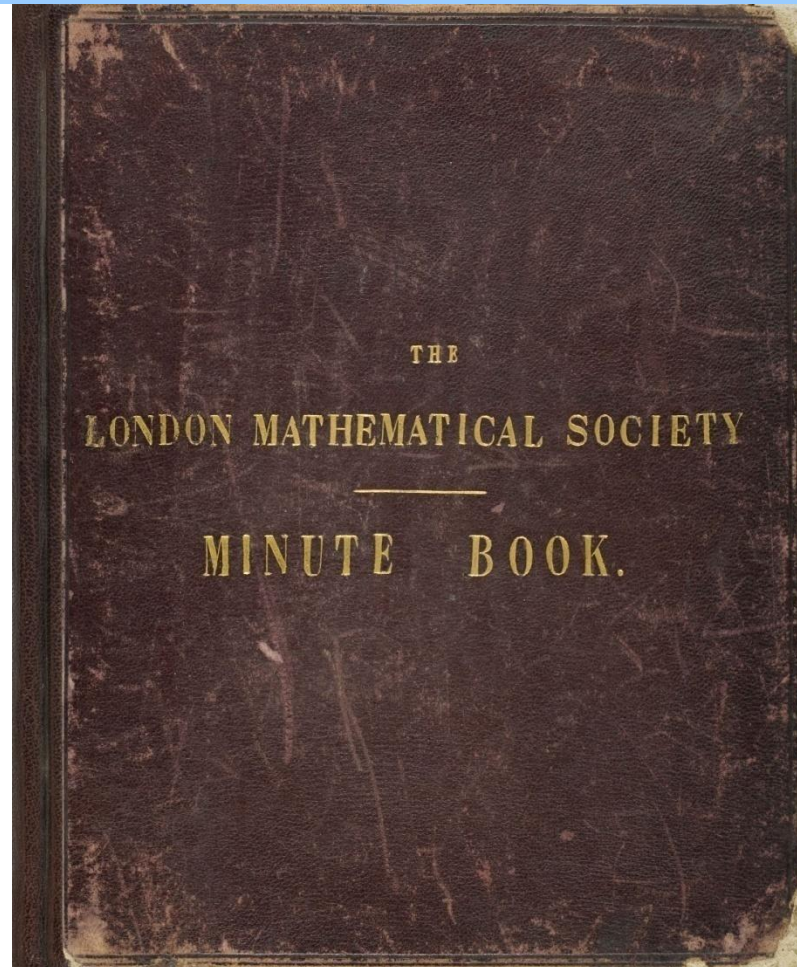
Foundation of LMS at University College London

George Campbell De Morgan organised the first meeting, and his father, Augustus De Morgan became the 1st President

1865



LONDON
MATHEMATICAL
SOCIETY
EST. 1865



THE
LONDON MATHEMATICAL SOCIETY
MINUTE BOOK.

Members of the Society at its Formation.

Prof. De Morgan F.R.S.	-	91 Adelaide Road N.W.
Dr. Hirst F.R.S. Ph.D.	-	113 Waverley Place St John's Wood N.W.
Professor Newth M.A.	-	25 Clifton Road N.W.
Mr. W. Watson B.A.	-	60 Oakley Sq. N.W.
" H. M. Bompas M.A. LL.B.	-	9 Kings' Bench Walk E.C.
" A. C. Ranjard	-	Exeter Coll. + 13 Hunter St. E. 24 St Andrew's St Cambridge
" D. L. Alexander B.A.	-	50 Wimpole St. W.
" G. C. De Morgan M.A.	-	91 Adelaide Road N.W.
" P. Magnus B.A., B.Sc.	-	23 Brunswick Sq. W.C.
" H. H. Coxen Hardy LL.B.	-	2 New Sq. Lincoln's Inn. Dunstable, Beds.
" W. Jardine M.A.	-	2 Circus Place, Finsbury Circus. E.C.
" B. Nisch M.A., B.Sc.	-	16 Finsbury Square E.C.
" M. Adler M.A.	-	
" J. Bridge M.A.	-	
" N. E. Hartog B.A.	-	300 Camden Road N.W.
" J. F. Norris (no Nov. 1865)	-	
" F. R. Dasai	-	Univ. Coll.
" J. N. Bruce	-	48 Kensington Gardens Square W.
" F. Topley	-	22 Euston Square
" E. H. Bask M.A.	-	5 Holly Terrace Highgate
" E. Waterhouse B.A.	-	Old Jewry Chambers E.C.
" E. Dessé	-	Univ. Coll. 43 Kensington Gardens Square W.

First minute book
list of the 27 original members

1866



LONDON
MATHEMATICAL
SOCIETY
EST. 1865



J.J. Sylvester,
2nd President
of the Society.

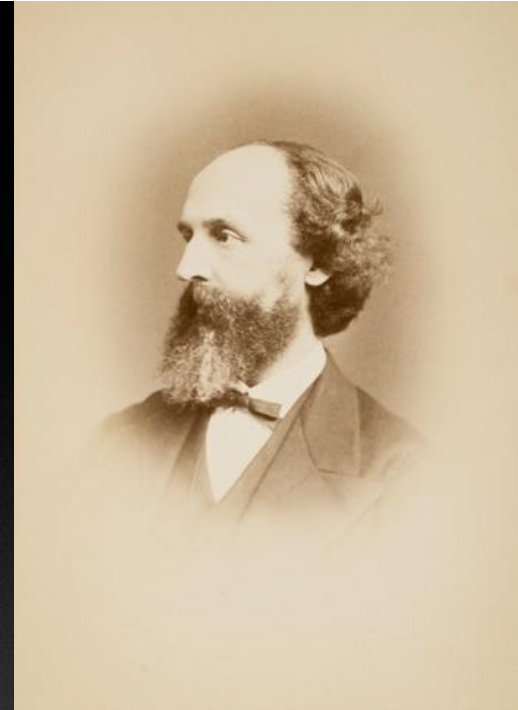


LMS moves to Old Burlington
House, Piccadilly

1866



LONDON
MATHEMATICAL
SOCIETY
EST. 1865



Julius Plücker

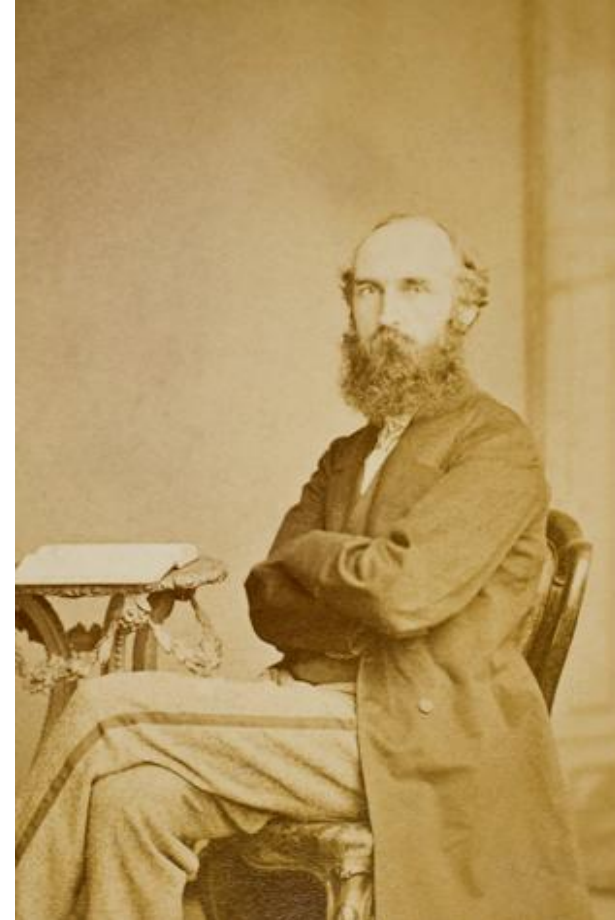
Thomas Hirst

Plücker Collection of boxwood models of quartic surfaces given to Thomas Archer Hirst, Vice-President of LMS, and donated to the Society

1870



LONDON
MATHEMATICAL
SOCIETY
EST. 1865



Move to Asiatic Society, 22 Albemarle Street
William Spottiswoode, President

1874



LONDON
MATHEMATICAL
SOCIETY
EST. 1865

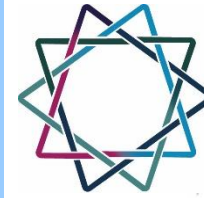
Donation of £1,000
from John William
Strutt (Lord Rayleigh)

Generous donation
enabled the Society to
publish volumes of the
*Proceedings of the
London Mathematical
Society.*



J.W. Strutt
(Lord Rayleigh),
LMS President 1876-78

1881



LONDON
MATHEMATICAL
SOCIETY
EST. 1865

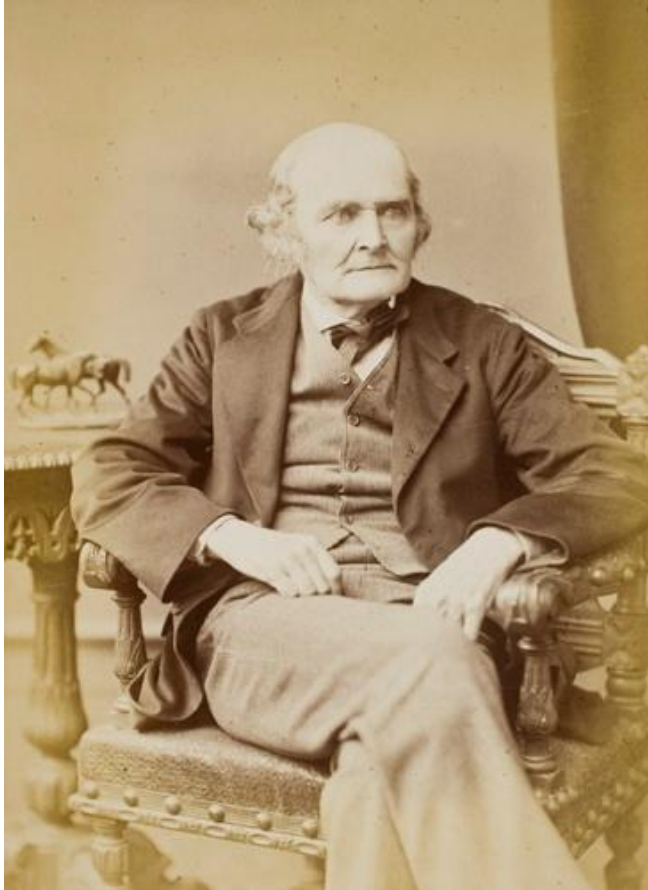


First women members
Charlotte Angas Scott and Christine Ladd

1884



LONDON
MATHEMATICAL
SOCIETY
EST. 1865



First De Morgan medal
awarded to
Arthur Cayley

1885

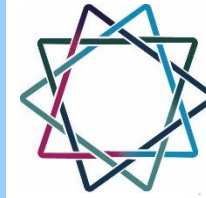


LONDON
MATHEMATICAL
SOCIETY
EST. 1865



Sophie Bryant
First woman to have
a paper published in
LMS Proceedings

1916



LONDON
MATHEMATICAL
SOCIETY
EST. 1865



Return to Burlington House the
home of LMS until 1998

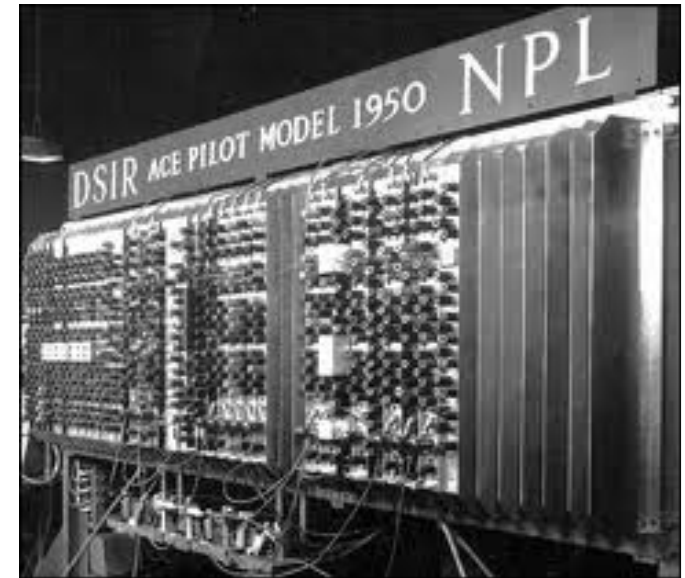
1937



LONDON
MATHEMATICAL
SOCIETY
EST. 1865



LMS *Proceedings*, 1937
published Alan Turing's first paper
On Computable Numbers



ACE
Turing's Automatic
Computing Engine,
1950

1947



LONDON
MATHEMATICAL
SOCIETY
EST. 1865

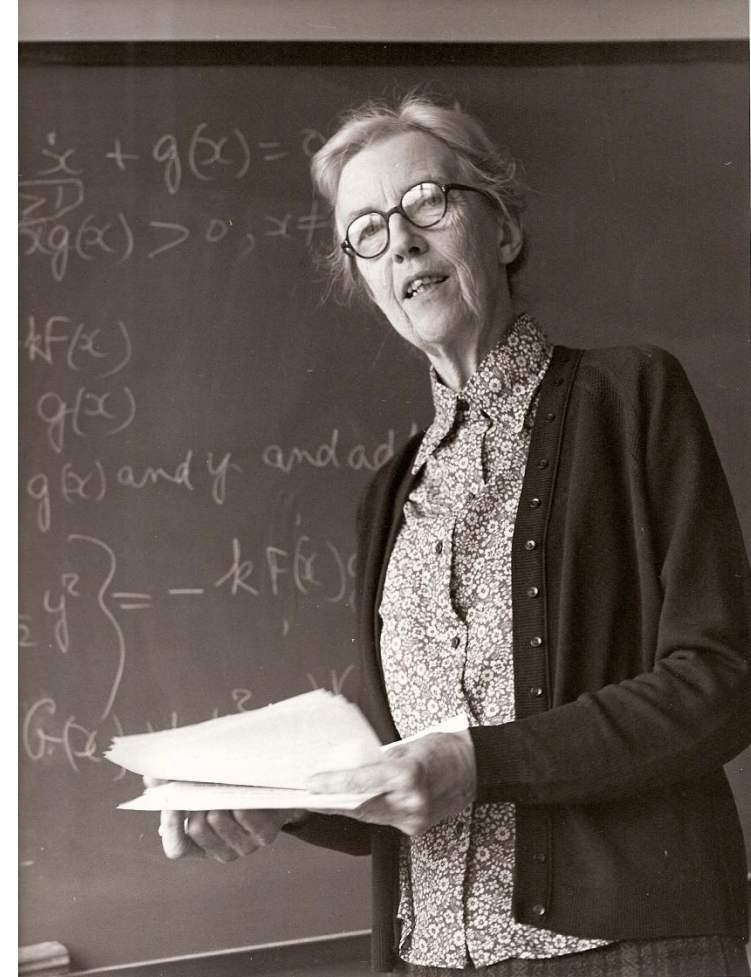


Death of G.H. Hardy
Most influential 20th century mathematician
Twice LMS President in 1926 and 1939

1961

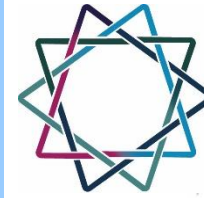


LONDON
MATHEMATICAL
SOCIETY
EST. 1865

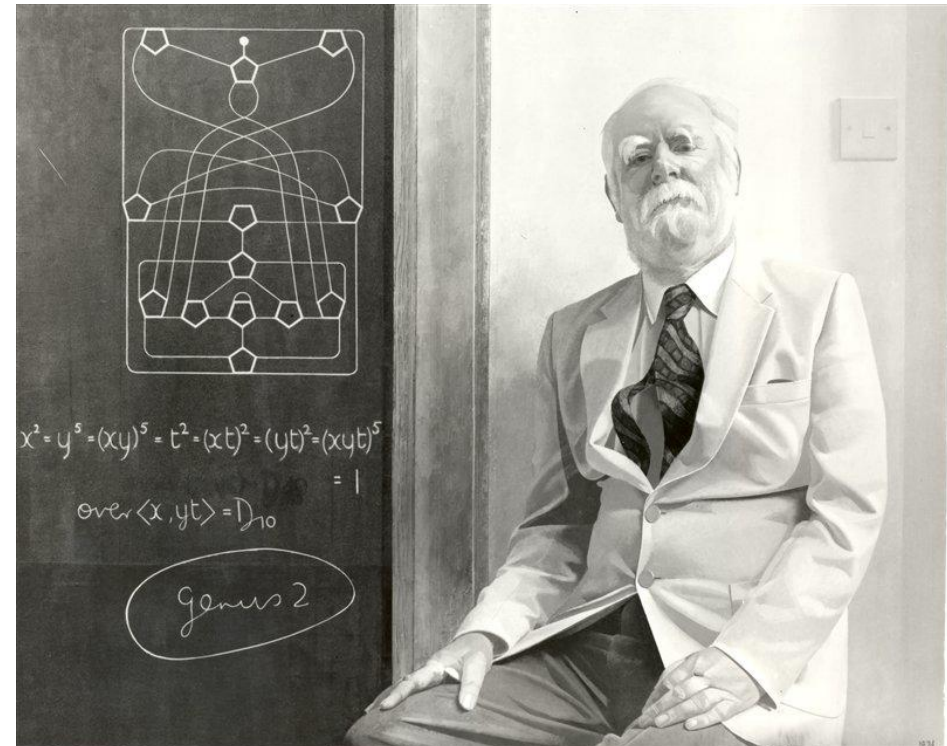


Mary Cartwright
first woman President of LMS

1965



LONDON
MATHEMATICAL
SOCIETY
EST. 1865

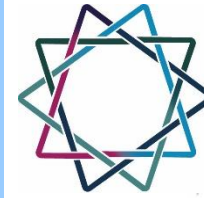


Centenary of London Mathematical Society

Grant of Royal Charter

Graham Higman, President

1998



LONDON
MATHEMATICAL
SOCIETY
EST. 1865



Move to De Morgan House, opened by Sir Michael Atiyah with seven Fields medallists present.

2015 150th Anniversary



LONDON
MATHEMATICAL
SOCIETY
EST. 1865

Celebrating the contributions of UK mathematics over 150 years of achievements.

Mathematics: Unlocking Worlds

- 150 Years of the LMS and Mathematics,
- Mathematics as Part of our Culture,
- New Ways of Communicating Mathematics.

Key Messages

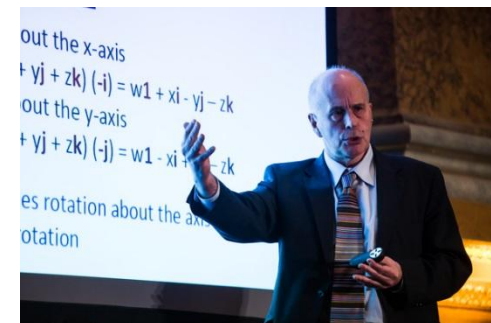
Mathematics transforms people's lives
Mathematics is everywhere and for everyone
Mathematics Research: Curiosity, Creativity, Discovery



Nigel Hitchin, Oxford



Frances Kirwan, Oxford



Robert Calderbank, Duke University

150th Anniversary



LONDON
MATHEMATICAL
SOCIETY
EST. 1865

Looking forward to exciting opportunities in mathematics for future generations.

Celebration Categories

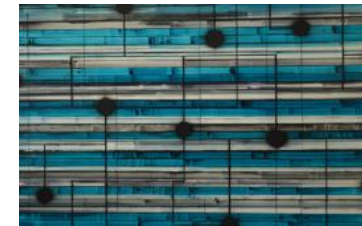
Scientific Meetings and Lectures

Mathematics and Culture

Special Grants and Prizes

Publications

Promoting Mathematics



Grants



LONDON
MATHEMATICAL
SOCIETY
EST. 1865

Encouraging mathematical research and collaboration

Funding the advancement of mathematical knowledge

Providing grants for discipline experts in both academia and industry, and to early career researchers, to support:

Mathematics research

Conferences

Overseas visitor grants

Networks

**Total awarded under Programme Committee in 2015/2016
in support of mathematics research and other activities**

£427,632



Publications



LONDON
MATHEMATICAL
SOCIETY
EST. 1865

Publishing and disseminating mathematical knowledge

Publishing

- 13 international, peer-reviewed journals, including seven with other learned societies and institutions,
- 2 book series (lecture notes and student texts),
- Individual book titles including Algebraic Number Theory by Cassels and Fröhlich.



LMS Reps Event 2016



LMS Popular Lectures 2016

Meetings, Events & International Affairs



LONDON
MATHEMATICAL
SOCIETY
EST. 1865

Communicating with LMS members and the community

Connecting with the international mathematical community

Sponsoring and organising UK-wide scientific lectures and meetings for research mathematicians, together with an annual lecture series specifically aimed at the wider public.

Participating in international mathematical initiatives and promoting the discipline more widely.

Event Highlights from 2015 & 2016

Women in Mathematics Day (Two-day event at Cambridge and Edinburgh in April)

Society meetings in the UK: Bristol, St. Andrews, London, Manchester

LMS Reps Event: Meeting with LMS Reps from UK institutions to feedback how we can better serve the mathematical community

LMS Prospects in Mathematics: Held in Loughborough

2016 Popular Lectures: Held at the Institute of Education, London, audience of 400

AMMSI: Awarded £10,500 to support postgraduates attending conferences in Africa in 2015/16.



Mathematical Modelling and Analysis of Complex Systems Conference 2015, Kenya



Women in Mathematics 2016 Q&A Panel

Prizes



LONDON
MATHEMATICAL
SOCIETY
EST. 1865

Celebrating mathematical achievements

Awarding a number of prestigious prizes in recognition of achievements in mathematics research and the promotion of mathematics

LMS Prizes 2016

De Morgan Medal

Professor Sir Timothy Gowers FRS

Fröhlich Prize

Professor Dominic Joyce FRS

Senior Berwick Prize

Dr Keisuke Hara and

Professor Masanori Hino

Whitehead Prizes

Dr Arend Bayer

Dr Gustav Holzegel

Dr Jason Miller

Dr Carola-Bibiane Schönlieb

Anne Bennett Prize

Dr Julia Wolf

*Professor Edmund Roberston FRSE
giving the 2016 Hirst Lecture*



Government / Policy



Advancing and **promoting** mathematics

Representing mathematics research and education to government and other national policymakers and sponsors.

Nine responses to government and national agencies consultations

Two Data Reports published on the position of the mathematical sciences

SET for Britain in Parliament. The Mathematical Sciences is now an integral part.



SET For Britain 2015 medal winners



Membership Benefits



LONDON
MATHEMATICAL
SOCIETY
EST. 1865

- Free online access to the *Bulletin*, *Journal* and/or *Proceedings of the London Mathematical Society*.
- Free online access to *Nonlinearity*
- Discounted subscriptions and publications
- Regular communication
- De Morgan House and UCL
- The LMS Community



Subscription Rates (2015/16)



LONDON
MATHEMATICAL
SOCIETY
EST. 1865

- *Ordinary membership; £70.00*
- *Reciprocity membership; £35.00*
- *Associate membership; £17.50*



Apply online: <http://www.lms.ac.uk/membership/online-application>

Becoming a Member of the Society



- Application form online:
<http://www.lms.ac.uk/membership/online-application>
- Counter-signatures
- Election to membership
- Signing the Members' Book which dates back to 1865.



New members sign the Members' Book.



Simon Tavaré, LMS President, chairing a meeting of the Society.

Contact Us



LONDON
MATHEMATICAL
SOCIETY
EST. 1865

Visit www.lms.ac.uk

LMS Departmental Reps:

www.lms.ac.uk/membership/lms-representatives

Email: Membership@lms.ac.uk

elizabeth.fisher@lms.ac.uk

anthony.byrne@lms.ac.uk

Tweet: @Londmathsoc